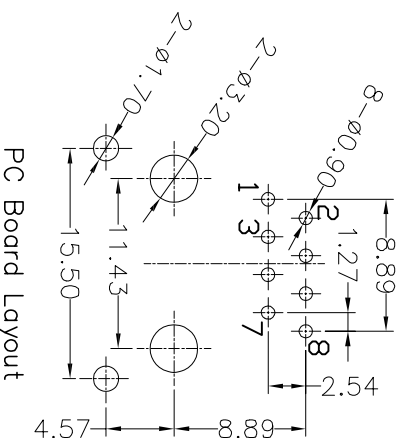
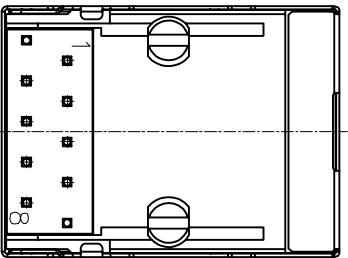
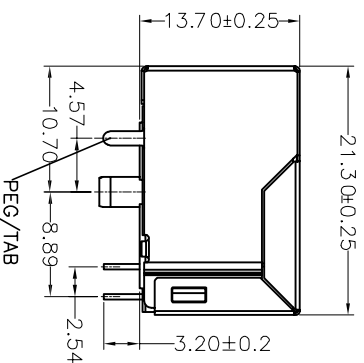
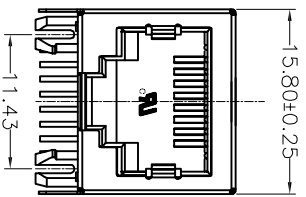


REV	MODIFICATION	DATE	DRAW	APPROVE
A		2012/10/29	JDL	Oscdr



NOTES:

ELECTRICAL:

- VOLTAGE RATING : 125 VAC RMS.
- CURRENT RATING : 1.5 AMP.
- CONTACT RESISTANCE : 50 MILLIOHMS MAX.
- INSULATION RESISTANCE : 500 MEGOHMS MIN @ 500 VDC.
- DIELECTRIC STRENGTH : 1000 VAC RMS 50Hz, 1MIN.

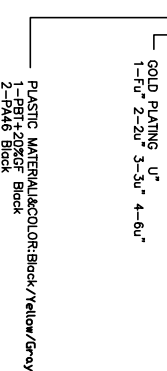
MECHANICAL:

- HOUSING MATERIAL : NYLON+30%GF UL94V-0.
- CONTACT MATERIAL : PHOSPHOR BRONZE ø0.46mm.
- PLATING : GOLD PLATING OVER NICKEL.
- SHIELD COPPER ALLOY(OR STEEL ALLOY) 0.20mm THICKNESS PLATING NI.
- LED/OPTION
- OPERATING LIFE : 750 CYCLES MIN.
- PCB RETENTION PRE-SOLDER : 1 LB MIN.
- PCB RETENTION POST-SOLDER: 10 LBS MIN.

ENVIRONMENTAL:

- STORAGE : -40°C TO +85°C.
 - OPERATION: 0°C TO +70°C.
 - WAVE SOLDERING TEMPERATURE: 255~265° (5~10SECONDS).
 - ROHS COMPLIANT
- MATES WITH MODULAR PLUG CONFORMING TO FCC PART 68, SUBPART F.

PART NUMBER: 59A-S1108A-XX



DIMENSION IN mm [Inch]		Shinhwa Tech Co., LTD	
TOLERANCE UNLESS OTHERWISE SPECIFIED	X.± 1°		
.X± 0.20	X.± 1°	FILE NO.	DWG NO. YL59A-S1108A
.XXX± 0.15	.X± 0.5°	TITLE 59A 1X1 8P8C PCB JACK WITH SHIELDED SIDE ENTRY,ROUND PIN	
.XXX± 0.075		PROJ.	SCALE 1:1
APPROVE	CHECK	Oscdr	SIZE A3
			SHEET 1
			REV A